

CONVECTAIR SAMBA

7835-C20-BB



Installation and operation notice
Read before operation / installing, DO NOT DISCARD

CHARACTERISTICS

Your new **Samba** is a combined convection and fan-forced heating unit. It is the perfect bathroom and entryway heater thanks to its in-wall design. Samba uses two elements: 1000 watts of silent convection heat that maintains a constant temperature, and 1000 watts of fan-forced heat. Thanks to its electronic two-stage integrated thermostat; it heats fast and maintains the heat. Use it with a unit that is equipped with an optional Convector programmer (**Pilot-wire only**) for maximum performance and efficiency.

PLANNING THE INSTALLATION

Caution: this unit must be connected to a 240 - volt or 208 - volt ,60 Hz. CONVECTAIR recommends that the Samba be installed by a qualified electrician, in accordance with national and local codes.

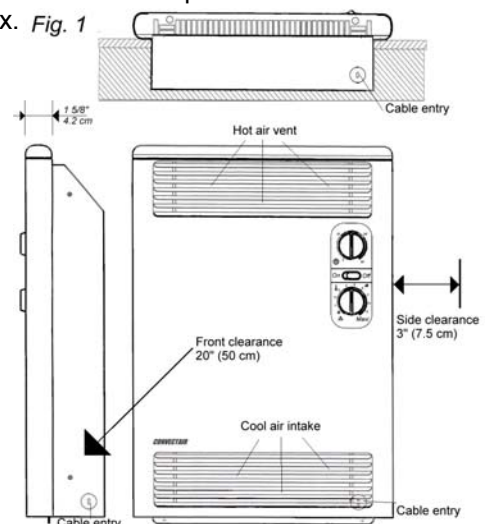
Note: If a programmer-equipped unit is intended to control the Samba, a 3/12 or an FAS 105 2/18 may be used in the cable installation that will allow the connection of the control (purple) wire.

1. Determine the location where the Samba is to be installed, ensure that there are no restrictions to the minimum clearances permitted (**Fig. 1**).
2. Ensure that there are no obstacles in the proximity that may interfere with the air circulation.
3. The electrical connection for the Samba must be made in the Samba's junction box (**Fig.1**).

INSTALLATION

It is important to respect the clearances and installation height for the Samba. The installation height should be no less than **4" (10 cm)** minimum and side clearance is **3" (7.5 cm)**.

1. Cut an opening in the wall (between the wall studs), in a rectangular form of **20 1/2" (52.5 cm)** in height and **13" (32.8 cm)** wide, with a dept of 3" (7.5 cm). Make sure there is sufficient clearance for the junction box wiring (**Fig.2**).
2. Make sure that the wires coming out of the wall, are in the proximity of Samba's junction box, bottom right hand corner.
3. The Samba is assembled in three distinct parts (**Fig. 4**) : The front cover (A), the control & heater block (B) and the rear housing (**Fig. 4**).
4. Take unit apart (by removing two retainer screws at the bottom), dismount the middle section by removing the 4 retainer screws, insert the rear housing in the wall opening made in previously.
5. Pass the wiring through the appropriate knock out, (it is recommended to use a strain relief busing). Use drywall screws combined with "E-Z anchors" fasteners to secure the rear cover box to the dry wall or studs (**Fig. 2**).
6. Wire connection, see **Electrical connections** section.
7. Insert the control & heater block section (B), in the now installed rear cover box (C). Ensure that it is secured properly to the backplate.
8. Cover the unit by installing the front cover (A) that protects the interior of the Samba. Hang the front cover from the rear cover box. Ensure that it is properly aligned then secure the retainer screws to the bottom lip of both front cover and rear box.



ELECTRICAL CONNECTIONS

Caution: this unit must be connected to a 240 volt or 208-volt , 60 Hz. Disconnect the power supply before making wiring connections. CONVECTAIR recommends that the Diva be installed by a qualified electrician, in accordance with national and local codes.

The electrical connection for this unit must be made in the junction box that is located in the bottom right hand corner of the Samba.

1. Connect the incoming ground (copper) wire with Samba's green wire (use appropriate connectors).
2. Connect the Samba's black wire with the black wire from the wall (Electrical network).
3. Connect the Samba's Red wire with the red wire (**white in U.S.**) coming out of the wall.
4. The 4th (Purple) wire of the unit, the end of this wire is sealed. **Must not be used** for any electrical connection. This wire (pilot wire) is to be connected if you are using a "Convectair Programmer".
5. Carefully place wires in the junction box and screw on the cover.

FUNCTIONS

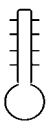
The control panel (**Fig. 3**) composed of two dials that determine the mode of heat for the Samba.

The timer:



Allows to set the desired time for both the convection and accelerated fan forced heat (2000 watts).

Setting the thermostat:



The Samba is equipped with a two stage thermostat. Stage one, activates the convection heating element (1000 W). Stage two, activates both convection and accelerated fan forced heating (2000 W).

How it works?

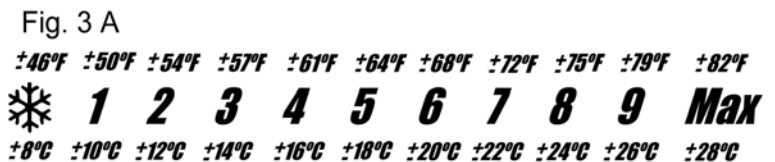
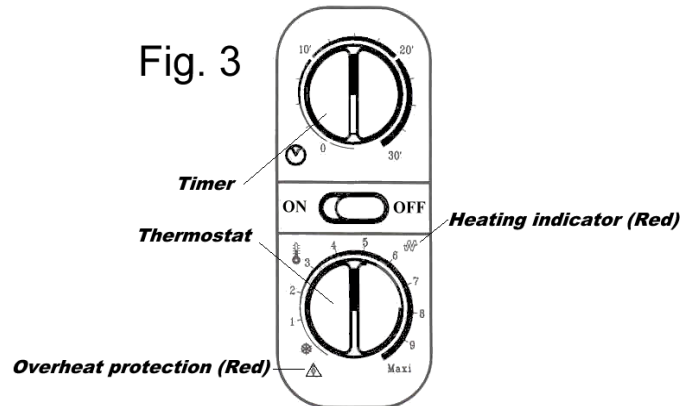
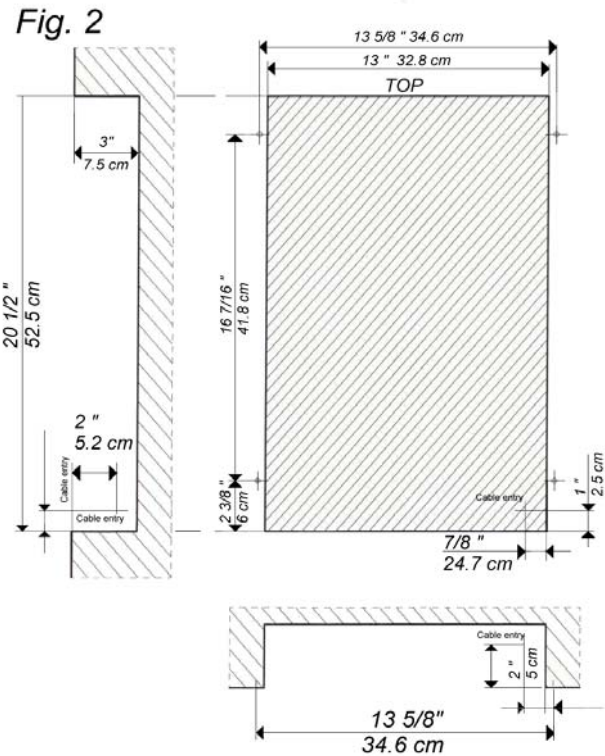
When the ambient temperature is within 3°C of the set point, the unit will function in stage one only with 1000 W of natural convection heating. If there is a temperature drop of more than 3°C, stage two will engage, and an additional 1000 W of accelerated fan-forced heat will help raise the temperature very quickly.

THERMOSTAT CONTROL

Room temperature is determined by the thermostat setting (**Fig. 3 A**). To set the temperature adjust the dial to the desired level (**between 6 and 9**). Wait for approximately one hour of use. If the setting is not satisfactory, turn the dial either right or left to raise or lower the temperature to the desired comfort level. (**Fig. 3**)

MAINTENANCE

To keep your unit clean, regular maintenance is suggested. To remove dust, use a soft cloth. To remove a stain, use a damp cloth. Never use abrasive products that may damage the finish.



CAUTION : During continual operation, the cover and vents may be HOT

SECURITY

Overheat protection for accelerated heat : will automatically deactivate the unit if the heating element overheats. (Fig. 3 Heating indicator will light up) To re-arm the overheat protection control, turn off the unit wait 5 minutes. If, The overheat protection is triggered constantly, it is possible that the element is saturated with dust and an internal cleaning may be necessary.

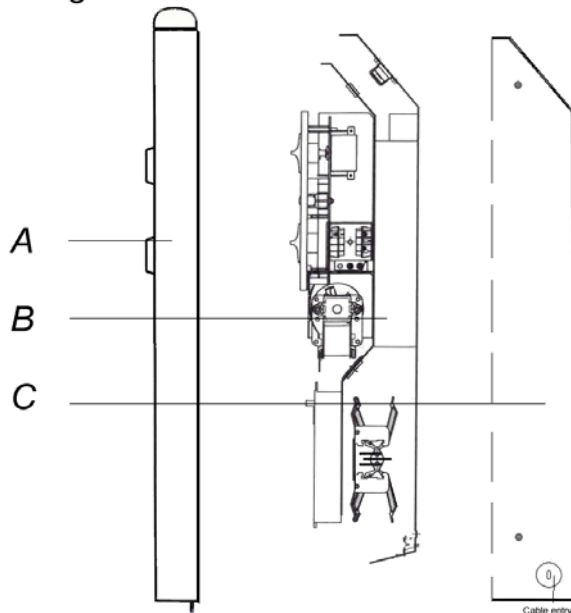
Overheat protection for convection : will deactivate convection heating element if the unit is covered up. The natural convection will reactivate only when the unit has cooled down sufficiently.

NOTE: For safety reasons. It is strongly recommended that the unit not be covered, for instance a wet towel or any other material that may block air vents.

PREVENTION

It is recommended to frequently clean the front grilles of the unit, especially in areas where smoke and dust are present. Never use unit during construction or other activities that generate high amounts of dust particles.

Fig. 4



NOTE

During the first time operation of the unit, it is possible that a slight odour and smoke are expelled from your Samba. This phenomenon is normal that will cease after a few minutes of use.

IF YOUR SAMBA DOES NOT WORK:

Prior to calling an electrician, please perform the following TESTS:

1. Make sure that the circuit breaker (in the main circuit box) is in the "ON" position.
2. Make sure that the thermostat and function selector switch are in the "ON" position.
3. Adjust the thermostat to the maximum power level.
4. ***If after all these tests, the unit does not work. Shut power "OFF" and wait 10 minutes, then repeat steps 1 to 3. If the unit is still non functional , contact your electrician or Convectair.***

WARRANTY

- 2 years against all defects
- 5 years on all heating elements

All CONVECTAIR units are subject to a double warranty: 2 years on all parts and manufacturing defects and 5 years on the heating elements. Warranty is applicable from date of purchase by the customer and under certain specific conditions. All details provided with each unit. Please keep your invoice (purchase or installation).

REPAIR CENTERS:

To find your nearest repair center, please call CONVECTAIR.

Montreal: (450) 433-5701

Toll-free from Canada and USA: 1-800-463-6478.

Fax :1 877 434-3166

E-mail : support@convectair.com

Web site : www.convectair.com

CONVECTAIR

30 Place Sicard, Sainte-Thérèse, Québec, Canada J7E 3X6

Tel: 1-800-463-6478 Fax: 450-434-3166

E-mail : support@convectair.ca Web: www.convectair.com