

IMPORTANT
to be kept by the user

CONVECTAIR

JAZZ

INSTALLATION AND OPERATING INSTRUCTIONS FOR TOWEL WARMER 7618-C20



Your new JAZZ has been designed to heat the bathroom and the towels prior and after utilization. The unit combines natural convection heating controlled by an electronic thermostat and forced air drying controlled by a timer. Also, the JAZZ can be connected to the CONVECTAIR PROGRAMMER for automatic setback with 3 levels: Comfort, Economy and Frost-protection.

PLANNING INSTALLATION:

Convectair recommends that the JAZZ be installed by a qualified electrician, in accordance with national and local codes.

NOTE: If you plan to control the JAZZ with CONVECTAIR's central "Programmer", the installation must be done using three-conductor wiring (3-12). You may also use regular two-conductor wiring combined with FAS 105 2-18 cable using only one of the two conductors.

- 1- Locate exact position where towel warmer is to be installed.
- 2- Due to its weight, the unit should preferably be affixed to wall studs or other wall reinforcement. Otherwise use 4 auto-piercing "E-Z Ancor" fasteners (or equivalent).
- 3- Installation height for the unit can be adapted to user's needs. Suggested installation height is 40" (101.5 cm) but never less than 30" (76 cm) from the floor. Minimum clearance for the sides is 6" (10 cm) and top is 12" (30.5 cm) from any surfaces.
- 4- A 3" x 2" junction box must be installed in the wall prior to electrical hookup. The box must be of appropriate depth to receive the necessary electrical connections. The cover is provided with the unit cable.

INSTALLATION:

- 1- Draw horizontal line on the wall at 51 1/2" from the floor.
- 2- Free mounting bracket by pressing and pulling both locking brackets at the back of the unit.
- 3- Hold mounting bracket to wall above the line and mark the 4 holes to be pierced.
- 4- Remove mounting bracket and insert, if necessary, the 4 auto-piercing "E-Z Ancor" fasteners.
- 5- Replace mounting bracket and fasten it with 4 screws.

IMPORTANT: 3 CONDUCTOR WIRING SHOULD BE USED IF YOU ARE PLANNING TO USE THIS UNIT WITH THE CONVECTAIR "PROGRAMMER" (SEE TECHNICAL SHEET)

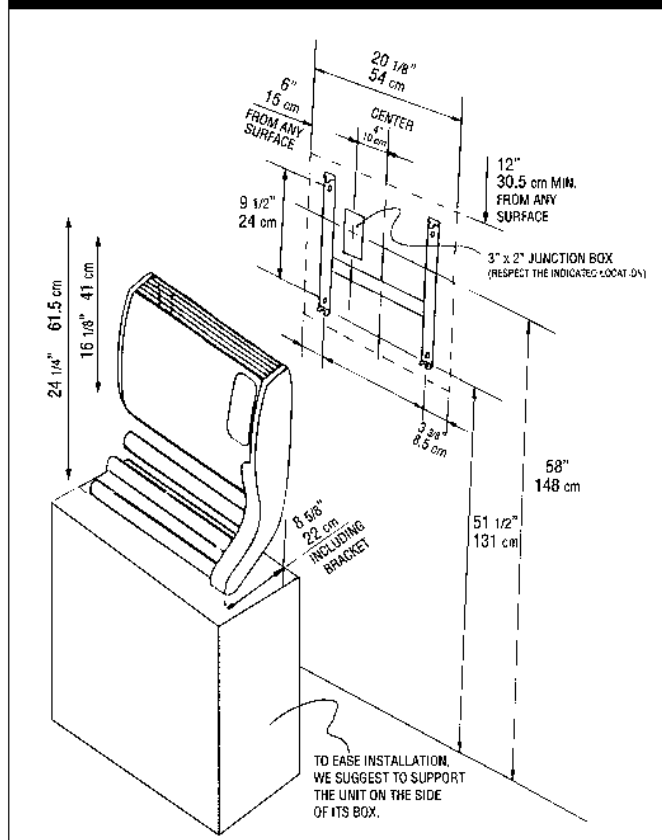


Figure 1

WIRING:

CAUTION: This unit must be connected to a 240 or 208 volts circuit, 60 cycles. Disconnect power supply before making wiring connections to prevent electrical shock or equipment damage.

NOTE: The supply cable for this unit has 4 wires. A green wire for ground, red and black wires for power and a purple wire to link it to the CONVECTAIR central "PROGRAMMER" (a rubber cap prevents accidental contact to the purple wire).

- 1- To facilitate installation, we suggest that the unit be placed on the side of its box when making final connection (Figure 1).
- 2- Connect wires in the wall box and fasten the cover (attached to the unit cable).
- 3- Hook the CONVECTAIR unit onto the mounting bracket tabs with the unit slightly angled towards you.
- 4- Push the CONVECTAIR towards the wall until it is engaged on both locking brackets.

TEMPERATURE LIMITING CONTROL:


The towel warmer, is equipped with automatic reset controls for the heating and drying mode. In case of a malfunction of the unit, the JAZZ will stop heating automatically. Once the internal temperature has dropped sufficiently, the heater will restart automatically.


DO NOT COVER THE TOP OF THE UNIT WITH WET TOWELS OR OTHER OBJECTS.

OPERATION:

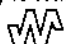
NOTE: For your convenience, two stickers with operation instructions are provided. Please stick the appropriate one inside the control cover.

The unit has an ON/OFF switch and two operating modes (Figure 2):

 - Thermostat controlled heating



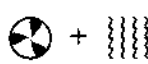
 - Drying and heating (if necessary) controlled by the timer (0 to 30 minutes).

Heating mode:

When the unit is on, the electronic thermostat controls the heating. To set the thermostat, adjust the setting dial to comfort zone between 5 and 7. After approximately one hour of operation, adjust the desired temperature if necessary by slightly turning the setting dial clockwise to increase temperature and counterclockwise to reduce temperature. When the CONVECTAIR is on, it will cycle every 25-30 seconds. The indicating light  tells you when heat is on.

Drying mode:

This mode provides three settings:

-  : drying with air circulation only (+ heating according to thermostat setting)
-  : drying with hot air = 1000W. (+ heating according to thermostat setting)
-  : drying + heating = 2000W. (continuous heating)

After selecting the desired mode, turn on the timer to desired amount of time. When the timer shuts off, the drying will stop automatically and the heating mode will continue on thermostat setting.

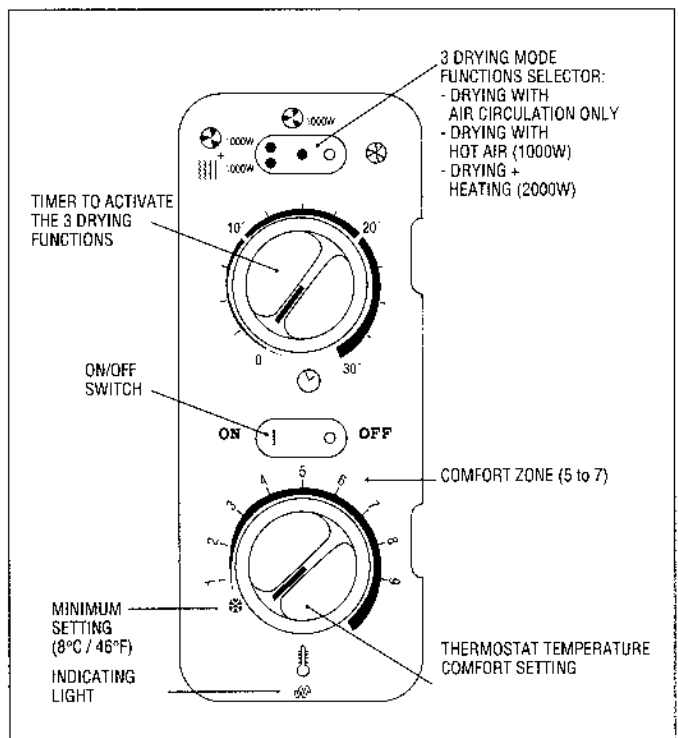


Figure 2

Note: When the JAZZ unit is attached to the CONVECTAIR central PROGRAMMER, the heating becomes dependant of the PROGRAMMER settings:
COMFORT FUNCTION: temperature is set according to the JAZZ thermostat.

ECONOMY FUNCTION: automatically sets the JAZZ to 4°C (7°F) lower than its thermostat setting.

FROST PROTECTION: automatically sets the JAZZ to a temperature of 7°C (45°F).

Please refer to the PROGRAMMER technical sheet for more information. The 3 drying functions are controlled by the timer and are not affected by the use of a PROGRAMMER.

MAINTENANCE:

To keep your unit clean, regular maintenance is suggested. To remove dust, use a soft cloth. To remove a stain, use a damp cloth. Never use abrasive products which could damage finish.

WARNING: In certain cases, it is possible that a yellowing of the grille occur after a certain time. This is not due to a manufacturing defect. This is caused by surrounding air, which contains smoke and dust, being heated and released through grille.

PREVENTION: It is suggested that grilles be frequently cleaned especially with units installed in locations where cigarette smoke is present. Never use the heater during construction work or other activities that generate a lot of dust.

For a better performance, and a maximum efficiency, it is suggested that dust and lint be regularly removed from protective grille situated at the base of your CONVECTAIR.

NOTE: The first time your CONVECTAIR heats, a light smoke could be released. This is normal and should disappear after about 2 to 3 minutes.

IF YOUR CONVECTAIR DOES NOT HEAT:

Before calling your electrician, please go through these simple checks:

- 1- Make sure the breaker in the distribution panel is in the "ON" position.
- 2- Turn the unit switch ON.
- 3- Place the function selector on Drying + Heating Mode and activate the timer.
- 4- If, after these verifications, your unit still does not function, call your electrician or your closest CONVECTAIR repair center.

WARRANTY:

- 2 years against all defects
- 5 years on heating elements

All CONVECTAIR units are subject to a double warranty: 2 years on all parts and manufacturing defects and 5 years on the heating elements themselves. Warranty is applicable from date of purchase by the customer and under certain specific conditions. All details furnished with each unit. Please keep your invoice (purchase or installation).

REPAIR CENTERS:

Contact CONVECTAIR for information regarding your closest repair center.

Montreal: (514) 433-5701
Toll-free from Canada and USA: 1-800-463-6478

CONVECTAIR

30 Place Sicard, Sainte-Thérèse, Quebec, Canada J7E 3X6
Tel.: (514) 433-5701 • Fax: (514) 434-3166
E-mail: support@convectair.ca • Web site: <http://www.convectair.ca>